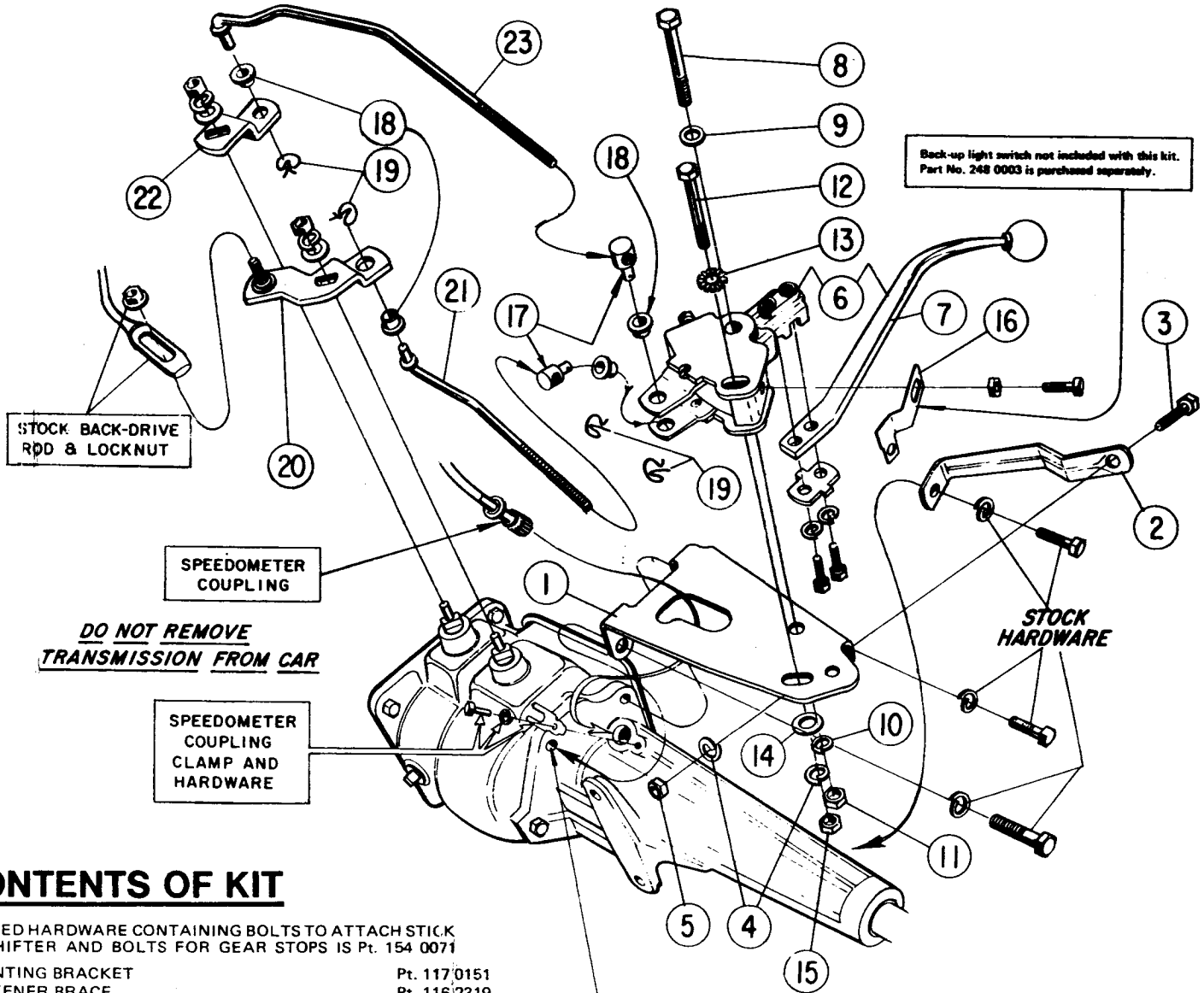




MASTERSHIFT

INSTALLATION INSTRUCTIONS

U.S. PATENT NO. RE25,561 & 3,052,135



CONTENTS OF KIT

BAGGED HARDWARE CONTAINING BOLTS TO ATTACH STICK TO SHIFTER AND BOLTS FOR GEAR STOPS IS Pt. 154 0071

MOUNTING BRACKET	Pt. 117 0151
STIFFENER BRACE	Pt. 116 2319
3/8-24 x 7/8 HEX-HEAD CAP SCREW	Pt. 215 3419
3/8" SPLIT LOCKWASHER	Pt. 9700359 (2)
3/8-24 HEX-NUT	Pt. 9700661
SHIFTER & STICK ASSEMBLY	Pt. 366 6809
STICK	Pt. 238 4331
7/16-14 x 3 HEX-HEAD CAP SCREW	Pt. 215 3447
7/16" FLATWASHER	Pt. 9600561 (2)
7/16" SPLIT LOCKWASHER	Pt. 9700404
7/16-14 HEX-NUT	Pt. 179 4343
3/8-16 x 2-3/4 HEX-HEAD CAP SCREW	Pt. 215 3448
3/8" INTERNAL/EXTERNAL TOOTH LOCKWASHER	Pt. 267 3497
3/8" FLATWASHER	Pt. 267 3477
3/8-16 HEX-NUT	Pt. 9600502
BACK-UP LIGHT SWITCH BRACKET	Pt. 117 0006
ROD ADJUSTING BUTTON	Pt. 119 3783 (2)
BUSHING	Pt. 118 1681 (4)
SPRING CLIP	Pt. 9700015 (4)
ARM 1ST/REV.	Pt. 105 7656
ROD 1ST/REV.	Pt. 213 2321
	EARLY-('63-'77)
	LATE-('78-'79)
ARM 2ND/3RD	Pt. 213 1562
ROD	Pt. 105 2320
	EARLY-('63-'77)
	LATE-('78-'79)
	Pt. 213 2322
	Pt. 213 0147

NOTE:
THIS HOLE IS DRILLED THROUGH TO TRANSMISSION. OIL WILL ESCAPE WHEN BOLT IS REMOVED. CHECK OIL LEVEL AFTER INSTALLATION AND REPLENISH AS NECESSARY.

ATTENTION

DUE TO VARIATIONS IN AUTO MANUFACTURING TOLERANCES, THE TRANSMISSION RODS SUPPLIED WITH THIS KIT MAY REQUIRE SLIGHT BENDING TO CLEAR OBSTRUCTIONS, ETC. PROTECT THREADS WHEN BENDING RODS.

BEND RODS COLD - DO NOT APPLY HEAT

367 0027